

**Exterior Insulation and Finish System (EIFS)**

***STF Elite PB***

**EIF System for wood and other approved substrates**

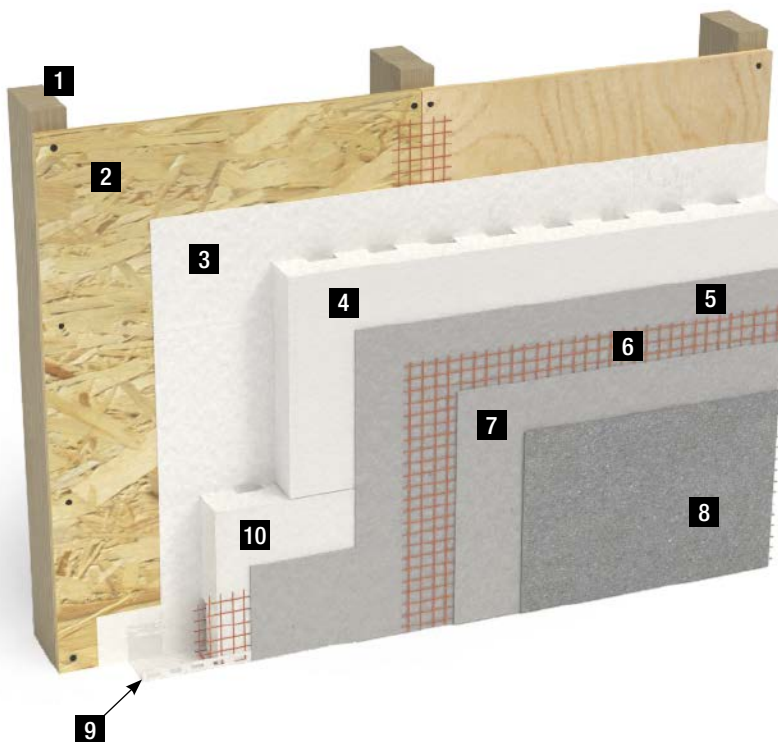
Pressure equalized EIF System that incorporates a secondary line of protection in conjunction with geometrically defined drainage features in the Type 1 **STF Elite GD Board / Elite PB**. The EIF System integrates a **STF Elitestop PB** water penetration barrier, which is also used as an adhesive to secure the **STF Elite GD Board** to the substrate. **Used for residential or commercial construction. Includes application on wood substrates.**

The **STF Elite PB** system meets the requirements of CCMC, report #13328-R

**Products used for installation**

*See technical product data sheets for more information*

- STF Elite GD Board / Elite PB
- STF Prime
- STF Fiberglass Mesh
- STF Architectural Classics & STF Genesis
- STF Elitestop PB
- Novatrim PVC Starter Strip
- STF Stratum



- 1** Steel or wood structure
- 2** Wooden substrate (Aspenite or plywood)
- 3** Waterproofing membrane STF Elitestop PB
- 4** STF Elite GD Board / Elite PB grooved insulation panel
- 5** STF Stratum base coat
- 6** STF Fiberglass Mesh embedded in the base coat and STF Self-Adhesive 3" Mesh for joints
- 7** STF Prime primer coat
- 8** STF Architectural Classics & STF Genesis finish coat
- 9** PVC Novatrim Starter Strip
- 10** Grooved insulation starter pre-coated strip with mesh buried in base coating

The application instructions and performance characteristics are based on information we believe to be reliable. They are offered to the best of our knowledge, but without guarantee, as conditions and methods of use of our products are beyond our control.



## Thermal coating system with finishing coating

# STF Elite PB

### 1-Generalities:

#### 1.1 Substrate:

- 1.1.1 The **STF Elite PB** system can be applied to approved substrates for the installation of the Imperméa system such as: plywood - minimum 5/8"/Aspenite (OSB), surface cement, masonry (brick and other) surfaces, gypsum board (Dens-glass or equivalent), concrete panels, insulation (ICF).
- 1.1.2 If the substrate is plywood, it must be covered with **STF Elitestop PB** waterproofing coating and which also serves as an adhesive.
- 1.1.3 For other substrates, the joints must have been connected according to the method recommended by the manufacturer.

#### 1.2 Quality Assurance.

- 1.2.1 The applicator must provide the labour, materials and equipment necessary for the installation of the **STF Building Solutions's STF Elite PB** acrylic coating waterproofing system or an approved equivalent.
- 1.2.2 The applicator will be qualified, have at least 5 years' continuous experience in the installation of materials of the specified type and be able to provide proof of this at the request of the architect.
- 1.2.3 The applicator must provide on request a sample of 6" x 1' (15 cm x 30 cm) of each of the colours and textures chosen by the architect, using the same hardware, the same technique and the same tools that will be used for the implementation of the project.
- 1.2.4 The applicator must follow the manufacturer's specifications when installing the **STF Elite PB** system.

#### 1.3 Description of the **STF Elite PB** system.

- 1.3.1 The **STF Elite PB** system can be applied to approved substrates for the installation of the Imperméa waterproofing system such as: plywood (plywood) - minimum 5/8"/Aspenite (OSB), surface cement, masonry (brick and other) surfaces, gypsum board (Dens-glass or equivalent), concrete panels, insulation (ICF)

The following installation will be carried out:

- Of a water barrier and air barrier coating to waterproof the substrate. Liquid membrane, also used as an adhesive for polystyrene panel. **STF Elitestop PB**
- Of expanded polystyrene with grooves. **STF Elite GD Board / Elite PB**
- Of an acrylic base to incorporate the reinforcing mesh. **STF Stratum**
- Of a reinforcing mesh in fiberglass treated to resist alkali.
- Of a colourful primer (if needed). **STF Prime**
- Of a 100% finishing coating. **STF Architectural Classics & STF Genesis**
- By using mouldings (if needed).

- 1.4 Details of the **STF Elite PB** system.
  - 1.4.1 Installed on a plywood substrate waterproofing coating which also serves as an adhesive such as **STF Elitestop PB**.
  - 1.4.2 **STF Elite GD Board / Elite PB**, Grooved insulating panels of type 1 polystyrene foam, density 16 kg/m cu. (1 lb. / cu. Ft.), produced from virgin material, with a minimum thickness of 3.75 cm (1½") and maximum dimensions of 60 cm x 120 cm (24" x 48").
  - 1.4.3 The reinforcing fiberglass mesh, treated to resist alkalis, manufactured for and sold by **STF Building Solutions inc.**
  - 1.4.4 PVC trim mouldings approved by **STF Building Solutions inc.**
  - 1.4.5 The coloured **STF Prime** primer coordinates the colour of the finishing coating substrate
  - 1.4.6 The acrylic finishing coating: **STF Architectural Classics** & **STF Genesis**, 100% Acrylic copolymers, pre- mixed, colour and texture selected by the customer and manufactured by **STF Building Solutions inc.** (See reference manual). Texture: \_\_\_\_\_ Colour: \_\_\_\_\_
- 1.5 Delivery, storage and handling.
  - 1.5.1 Delivery: All materials provided by **STF Building Solutions inc.**, are to be delivered intact in their original packaging.
  - 1.5.2 Storage: All materials provided by the **STF Building Solutions inc.** must be stored and protected from the weather and damage, at a temperature above 5° C (41° F).
- 1.6 Conditions of site implementation.
  - 1.6.1 Temperature. Ambient air temperature should be at least 5°C (41°F) and increased during the installation of the **STF Elite PB** system and remain at 5° C (41°F) or higher, for at least 24 hours after installation.
  - 1.6.2 Protection of adjacent materials: protect adjacent materials from damage or splashes resulting from the laying of coatings. If necessary, cover surfaces, equipment, etc. with appropriate means.
  - 1.6.3 Coordination of work: coordinating the installation of the **STF Elite PB** system with other trades.
  - 1.6.4 Pace of work: provide the workforce necessary to ensure continuous operation without restarting (cold joint) and the variation in texture.
- 1.7 Guarantee
  - 1.7.1 From the date of receipt of the final payment for the work, **STF Building Solutions inc.** warrants the materials it provides, when applied according to application instructions and to the manufacturer's specifications, will produce results identical to those which are listed and described in the manufacturer's Reference Manual. This warranty applies only to the use of the products on substrates approved by **STF Building Solutions inc.**
  - 1.7.2 **STF Building Solutions inc.** is not responsible for the architecture, engineering and performance.
  - 1.7.3 Under this warranty, the sole and exclusive remedy will be that **STF Building Solutions inc.** will provide replacement materials, if it is determined that the materials supplied initially were defective, provided that not more than five (5) years have elapsed after the original application. **STF Building Solutions inc.** makes no other warranty - either implicit or explicit

## 2-Products:

## 2.1 Generality:

- 2.1.1 All materials and components of the exterior covering's **STF Elite PB** system should be obtained from **STF Building Solutions inc.** or its authorized representatives.
- 2.1.2 No substitution of materials will be accepted, unless authorized in writing by **STF Building Solutions inc.**
- 2.1.3 Acceptable materials: are components from **STF Building Solutions inc. STF Elite PB** system or an approved equivalent.

## 2.2 Materials and approved manufacturers.

- 2.2.1 **STF Elitestop PB** waterproof coating which also serves as an adhesive manufactured by **STF Building Solutions inc.**
- 2.2.2 **STF Elite GD Board / Elite PB**, expanded polystyrene insulation panels:
  - **STF Elite GD Board / Elite PB**, insulation panels manufactured by an approved manufacturer and sold by **STF Building Solutions inc.**
  - Expanded type 1, manufactured from virgin material.
  - Have a minimum thickness of 1½" (3.75 cm) in 2' x 4' sections (60 cm x 120 cm).
- 2.2.3 Base coating such as: **STF Stratum** manufactured by **STF Building Solutions inc.** A 100% acrylic base coating that mixed with Portland cement in a 1/1 ratio, will give a dough that will serve as an adjustment coating in which the fiberglass mesh will be incorporated.
- 2.2.4 Fiberglass mesh of 3" (7.5 cm), 9½" (23.75 cm) and 38" (95 cm) regular, medium or strong, treated against alkalis such as provided by **STF Building Solutions inc.**
- 2.2.5 Colorful **STF Prime** primer coating: recommended to coordinate the colour of the finishing coating substrate.
- 2.2.6 Finishing coating: **STF Architectural Classics & STF Genesis**. 100% Acrylic emulsion, mixed in the factory, including the colour and texture selected by the customer or architect, such as manufactured and supplied by **STF Building Solutions inc.** coatings.

The colour will be: # \_\_\_\_\_

(See the colour chart in the Reference Manual).

The texture will be: \_\_\_\_\_

(See the texture chart in the Reference Manual)

- 2.2.7 Water: clear and drinkable.
- 2.2.8 Sealants: Polyurethane approved by the manufacturer; the colour chosen by the architect.
- 2.2.9 PVC mouldings (If needed): as specified by the manufacturer.
- 2.2.10 Test results in the laboratory.  
(See section: Assessment of our Products in the Reference Manual).

## 3-Performance of work:

### 3.1 Inspection:

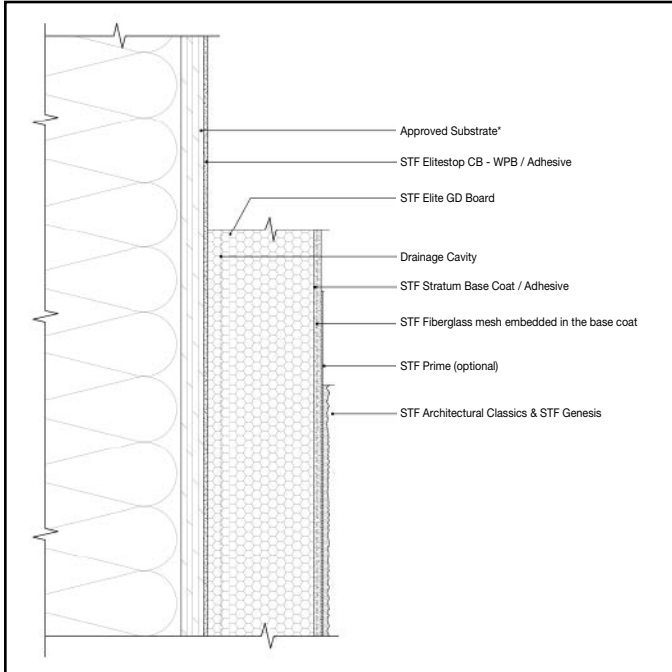
- 3.1.1 Before starting work, check the compatibility of the substrate with the project and proposed system specifications.
- 3.1.2 Notify the architect of unacceptable conditions and do not start work until the corrections have been made.

### 3.2 Installation:

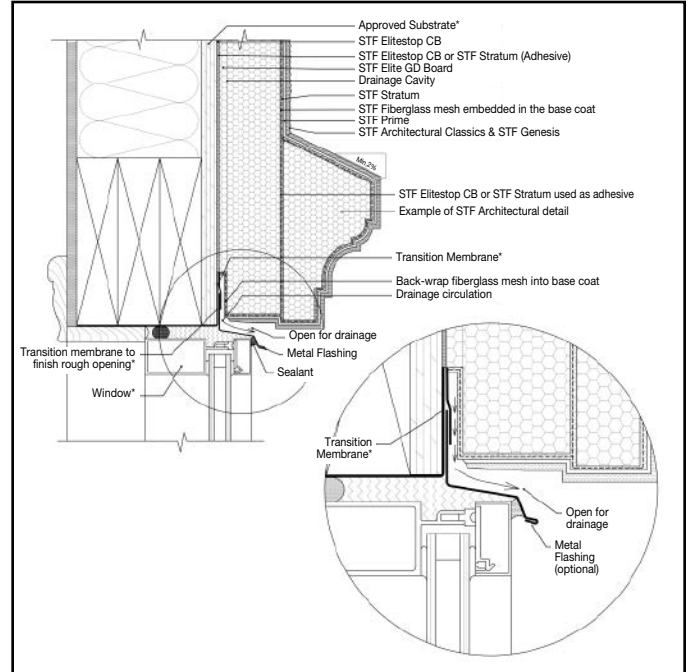
- 3.2.1 The plywood substrate should be covered with **STF Elitestop PB** waterproofing coating which also serves as an adhesive.
- 3.2.2 All the edges of openings (doors, window, dryer hoses, etc.) must be sealed with a Blueskin membrane or an approved equivalent.
- 3.2.3 Install perforated PVC departure mouldings and install a tape starting grooved pre-coated with insulating mesh embedded in the base coat.
- 3.2.4 An aluminum flashing or PVC water gutter will be installed at the top and bottom of all openings. Leave ¼" space on sides of openings to insert an etafoam cord and make an effective sealing joint.
- 3.2.5 For substrates other than plywood, which are not protected, cover the joints with the **STF Elitestop PB** waterproofing coating which also serves as an adhesive by incorporating the 3" (7.5 cm) mesh. Then, apply a layer of waterproofing coating onto the entire surface.
- 3.2.6 A **STF Elitestop PB** waterproofing coating will be applied over the entire surface of the substrate with a minimum thickness of 3/32" (2.5 mm). Wait 24 hours between installing the **STF Elitestop PB** waterproofing coating which also serves as an adhesive on the entire surface for the laying of polystyrene panels.
- 3.2.7 Grooved polystyrene panels will be installed
- 3.2.8 These panels will be positioned horizontally starting from the bottom of the wall and alternating the vertical joints. Press on the panel so that the adhesive is in contact with the substrate.
- 3.2.9 On each row, the vertical joints of the insulating panels will be offset from the joints of the lower panels.
- 3.2.10 Expansion joints will be installed at 20' (600 cm) vertically and horizontally if possible with a vertical line of opening or at each floor or on the recommendation of the architect. A good expansion joint means cutting the insulation right to the wall.
- 3.2.11 The gaps left between panels are to be filled with thin slices of insulation.
- 3.2.12 Sand all surfaces to ensure their flatness
- 3.2.13 Mesh bands measuring 9" (22.5 cm) x 12" (30 cm) will be installed at an angle of 45° at the corners of all openings.
- 3.2.14 Wait 24 hours between the laying of the mesh strips and the laying of the leveling layer
- 3.2.15 The **STF Stratum** base coating will be applied over the entire surface with a minimum thickness of 3/32" (2.5 mm) to encase the recessed fiberglass mesh. The fiberglass mesh must not be visible. The surface will immediately be flattened and smoothed by avoiding trowels marks.

- 3.2.16 If applicable, it is at this stage that the decorative mouldings or decorative grooves to be put on are carved. In the latter case, a minimum of ¾" (1.9 cm) of insulation will be retained under the grooves.  
*N.B. the top of any architectural or decorative molding (spandrel, window moulding, profiled decorative, etc.) which is not weatherproofed must always have a minimum slope of 10 degrees and a maximum width of 12 inches (30 cm).*
- 3.2.17 Wait 24 hours between the laying of the **STF Stratum** leveling coating and the finishing coating.
- 3.2.18 We recommend the application of one coat of **STF Prime** coloured primer to coordinate the colour of the substrate to the finishing coating colour.
- 3.2.19 The colour finishing coating # \_\_\_\_\_ and texture: \_\_\_\_\_ is to be applied continuously and graded immediately to give the work a uniform appearance to avoid holes with over-thickness, cut-off lines and defects.
- 3.2.20 Sealants will be applied according to the manufacturer's recommendation.
- 3.2.21 Clean the site as the work progresses. At the end of the work, remove the site of all excess scrap and surplus materials covered by this specification.

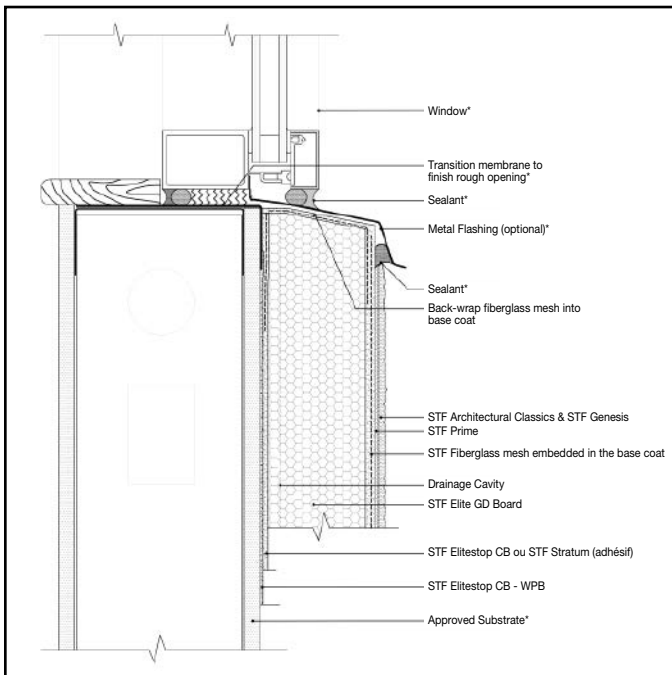




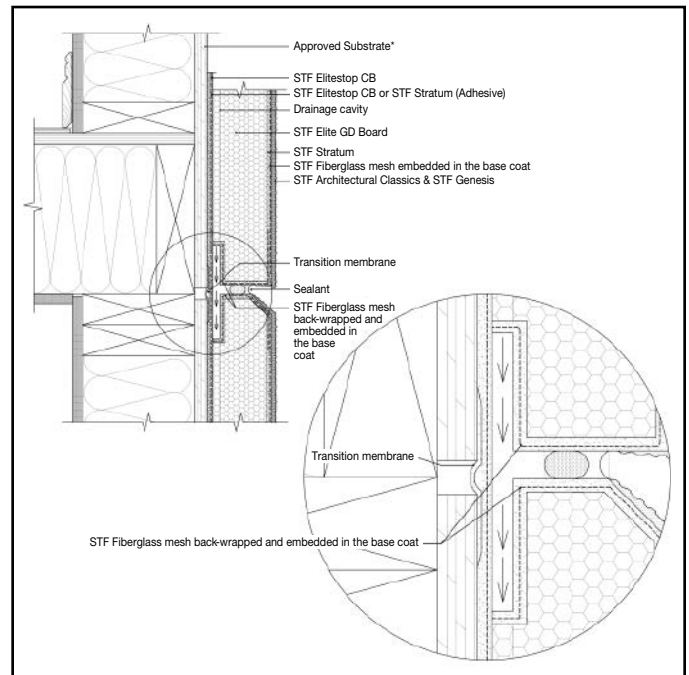
STANDARD SECTION



WINDOW HEAD

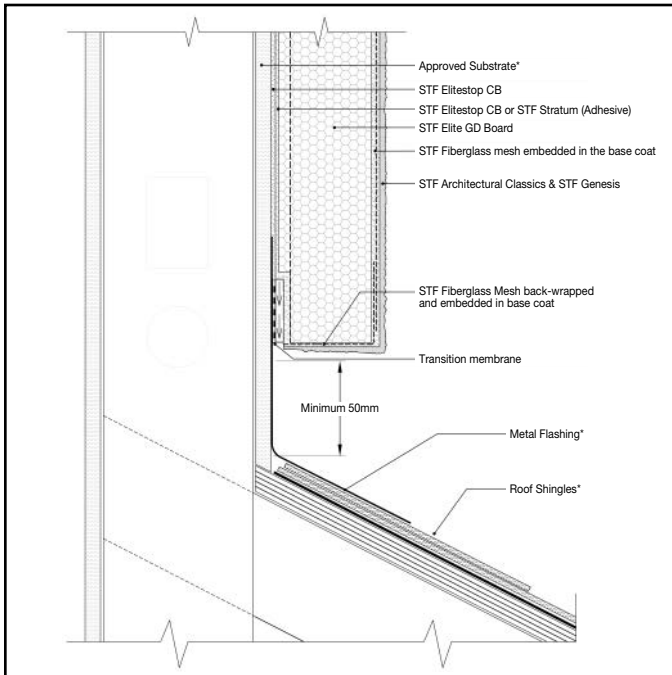


WINDOW SILL

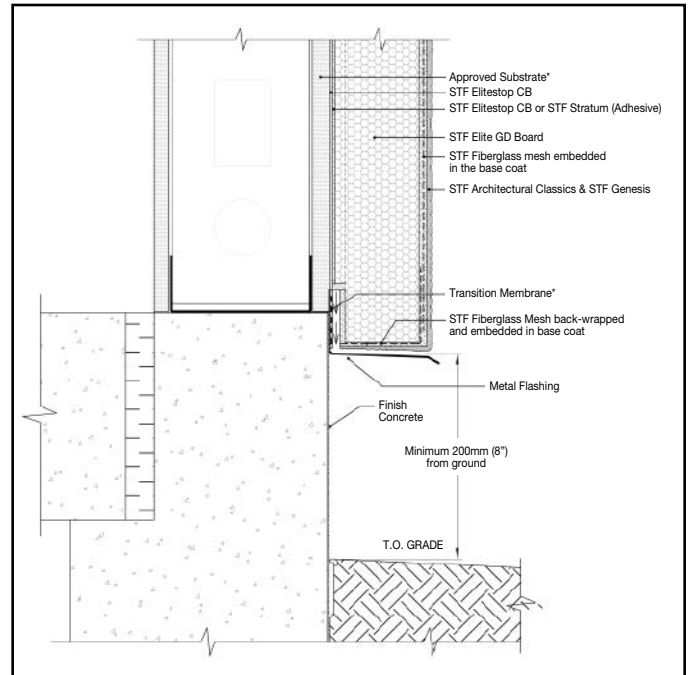


TERMINATION AT SLOPED ROOF

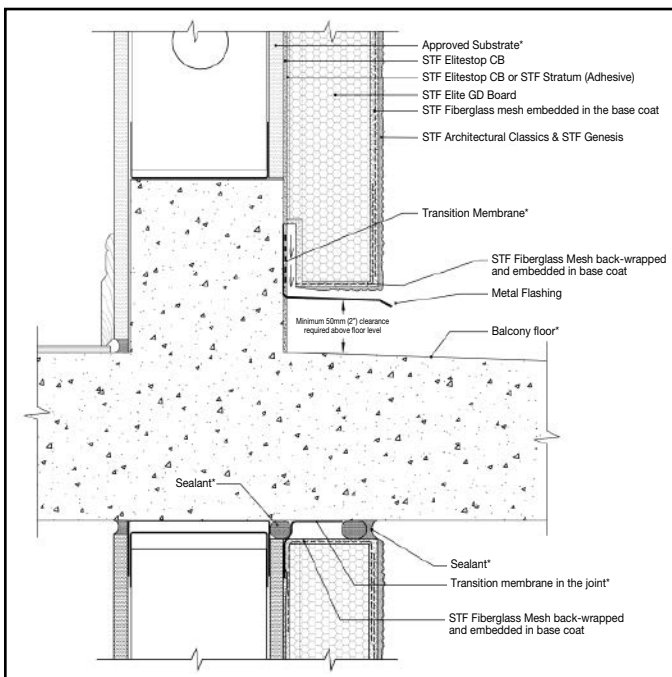
\*by others



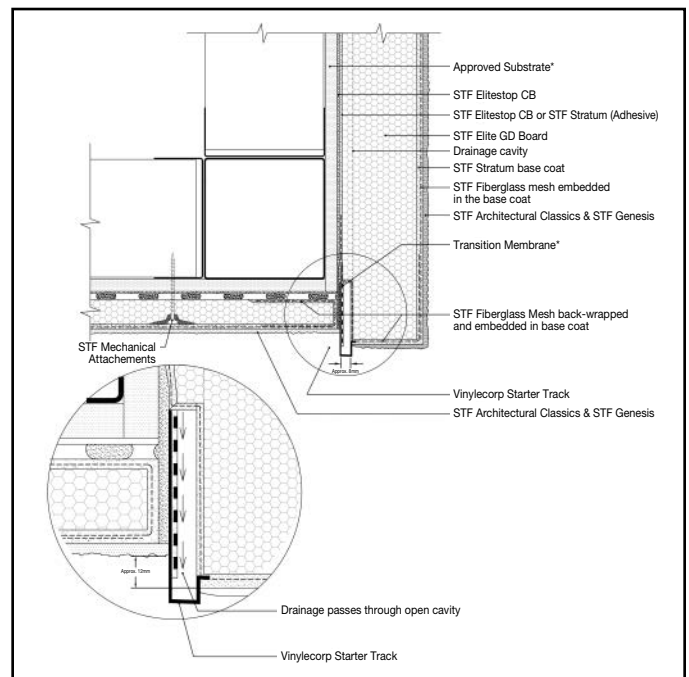
TERMINATION AT SLOPED ROOF



FOUNDATION TERMINATION

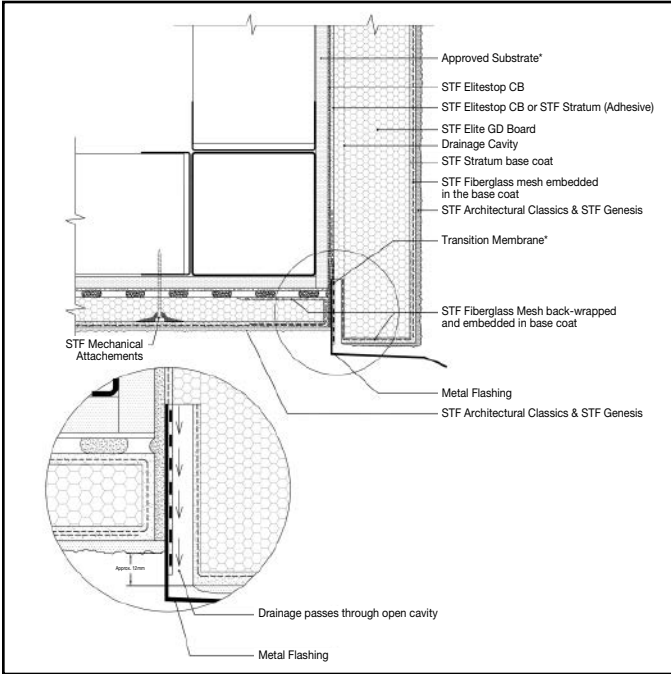


TERMINATION AT BALCONY FLOOR

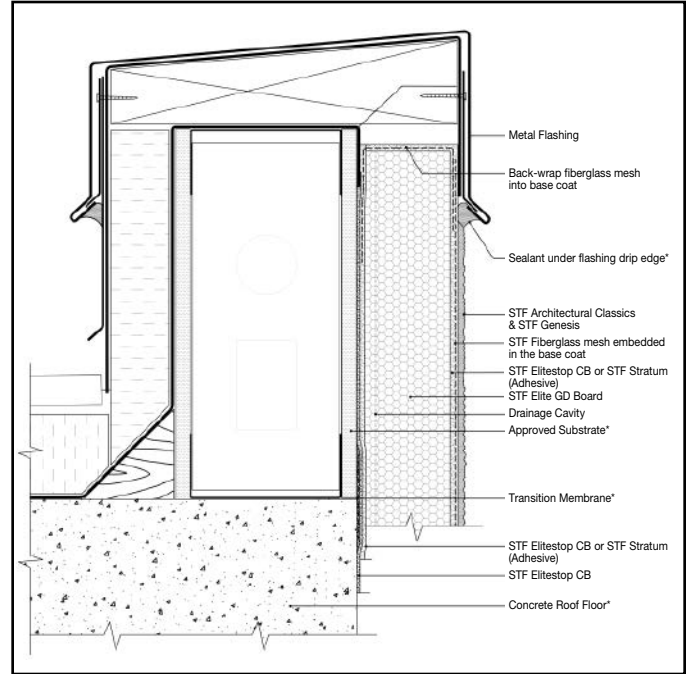


INTERFACE AT SOFFIT WITH EIFS (STARTER TRACK)

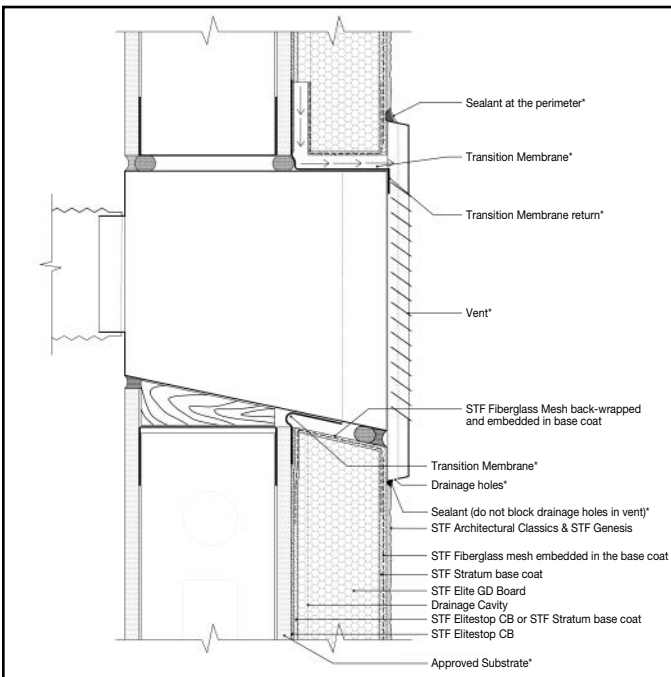
\*by others



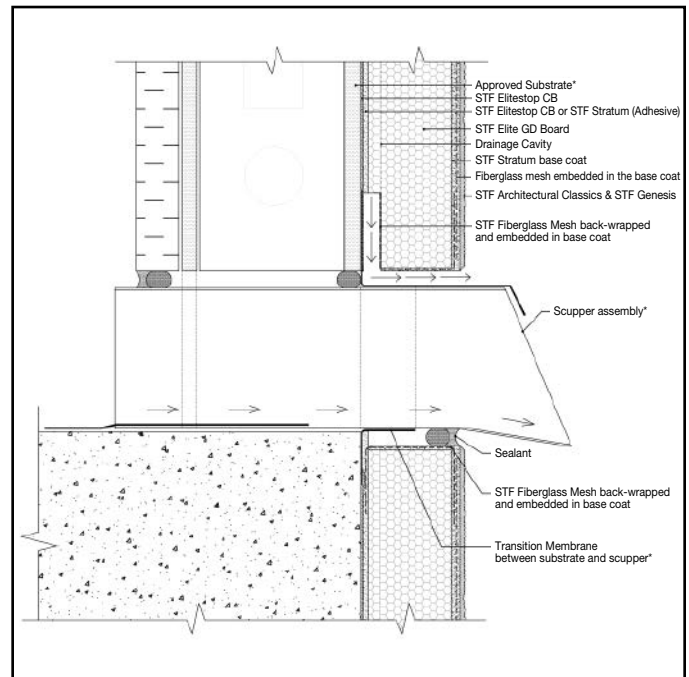
INTERFACE AT SOFFIT WITH EIFS (METAL FLASHING)



TERMINATION AT PARAPET

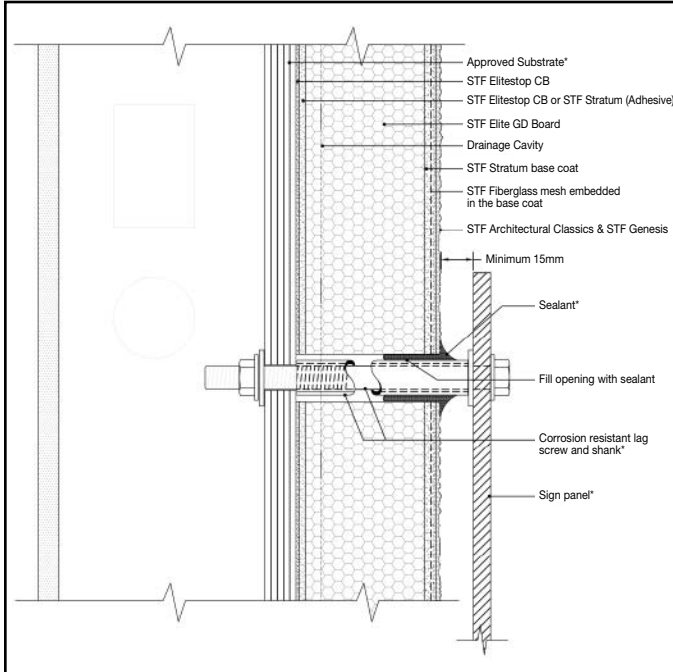


PENETRATION DETAIL

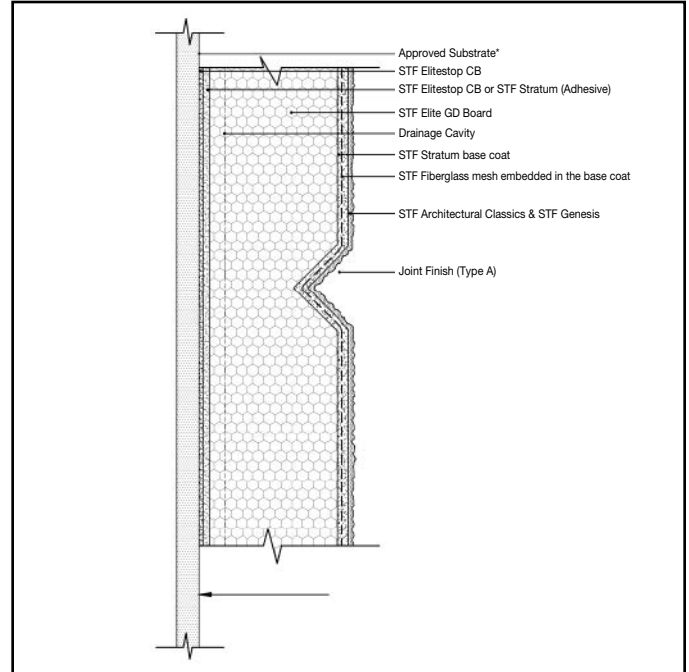


ROOF DRAINAGE DETAIL

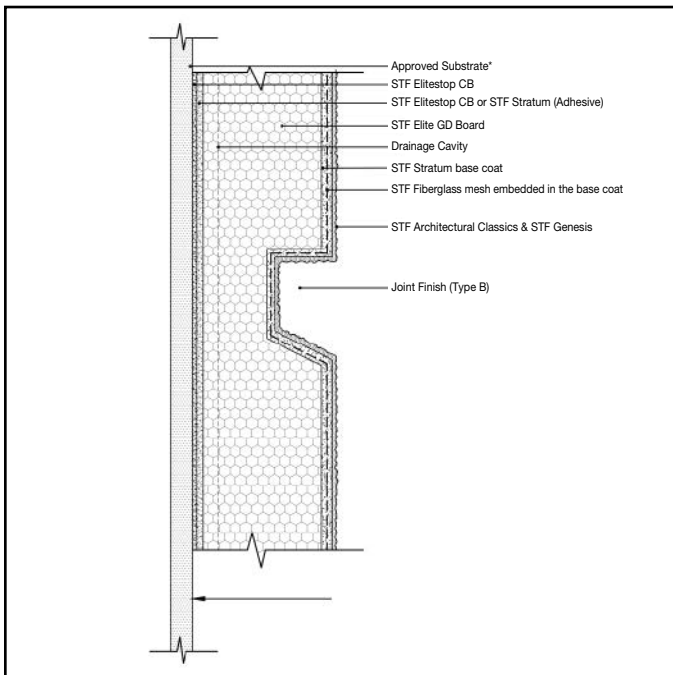
\*by others



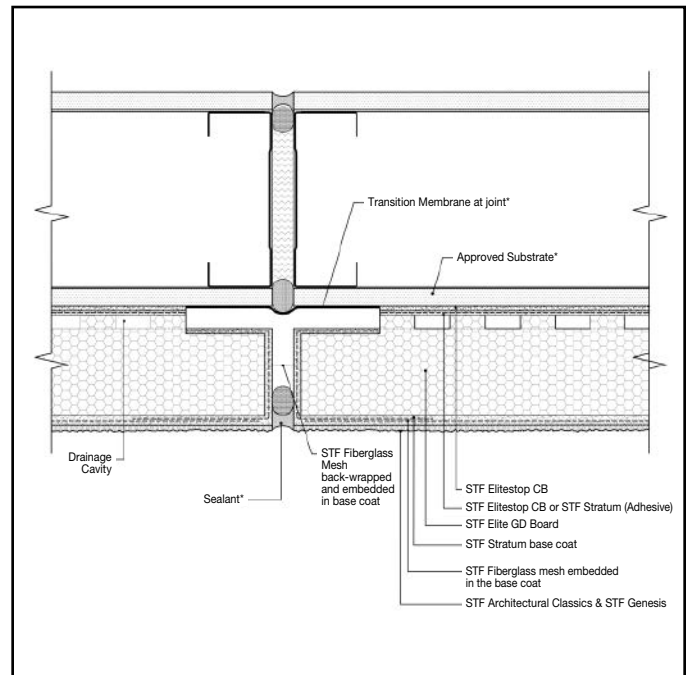
SIGN ATTACHEMENTS



AESTHETIC REVEAL - TYPE A



AESTHETIC REVEAL - TYPE B



VERTICAL EXPANSION JOINT

\*by others